

KOMPLEX

SEQUENCER

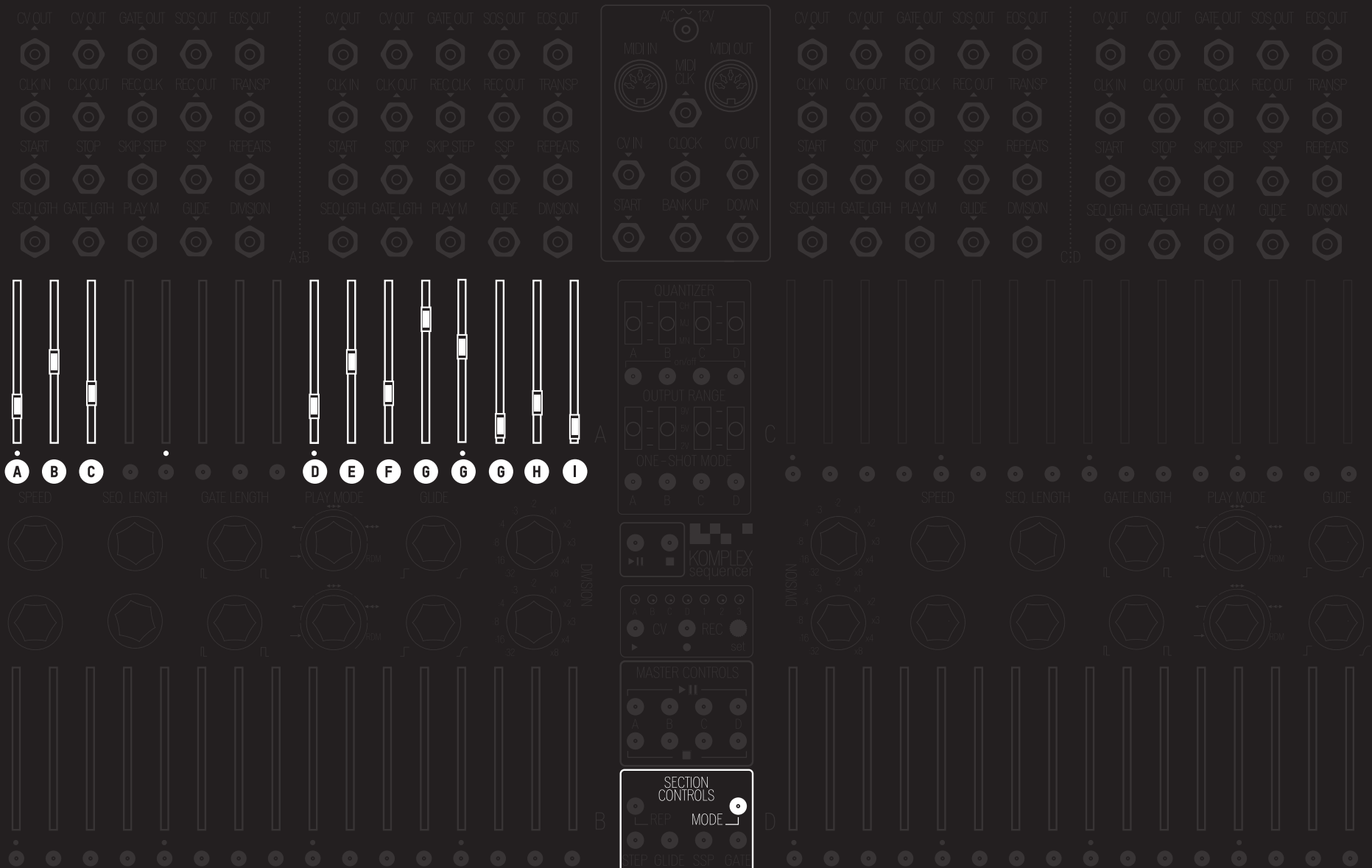
MODE MENU MANUAL



Mode Menu

Thank you for purchasing the KOMPLEX Sequencer!

This additional Mode Menu manual shows all the expert settings for the core functions of the KOMPLEX Sequencer. The Mode Menu works with each individual sequencer (A, B, C, D), identically like pictured in the graphic of Sequencer A. For more information about firmware updates we would like to refer to our website at koma-elektronik.com, where you can find the latest firmware under the KOMPLEX Sequencer section.



A SKIP STEP BEHAVIOUR

When step select button 1 is unlit, the steps that are deactivated in STEP MENU are skipped. When it is lit, the previous step is maintained for the period of the skipped step.

B REPEAT MODE

When step select button 2 is unlit, normal repeat mode is active. The step length does not change, and the steps repeat as many times set. When step select button 2 is lit, ratcheting repeat mode is active. The repeats fit into 1 step length, i.e., with repeats set to 4, the new step length is a 1/4 of the original step length but with 4 gates.

C UNIPOLAR / BIPOLAR OUTPUT

When step select button 3 is unlit, the CV outputs are unipolar. When lit, the CV outputs are bipolar.

D ANALOG / MIDI CLOCK DIVISION

When step select button 9 is unlit, the sequencer's Division knob operates normally when synced to an analog clock. When set at :4, the sequencer advances one step per trigger. However, when syncing the sequencer via MIDI, the MIDI CLK jack outputs one pulse per MIDI clock pulse. Set step select button 9 to lit so the Division knob is scaled and operates normally as above when synced via MIDI. Internal scaling is referred to 24 ppqn MIDI-Clock.

E MIDI START / STOP INPUT

When step select button 10 is unlit, the sequencer does not receive MIDI start and stop information. When it is lit, the sequencer receives MIDI start and stop.

F MIDI ON / OFF

When step select button 11 is unlit, the sequencer's MIDI Out is turned off. When it is lit, its MIDI Out is turned on.

G MIDI MODE

When step select button 12 is lit, the sequencer sends pitch via MIDI. When 13 is lit, it sends velocity. When 14 is lit, it sends a CC message. Only one button can be selected at a time, and it is not possible to deactivate all.

H MIDI CHANNEL

To select the MIDI channel per sequencer, press step select button 15. Then select the MIDI channel of your choice by selecting a step 1-16.

I MIDI CC NUMBER

Press step select button 16. Then select the CC number with the step select buttons as described: the CC numbers range from 0 to 127. The 3 digits are composed with two numbers referred to as x1 x2. The 16 step select buttons correspond to numbers 0-15. First, select the value of x1 (possible numbers 0-12). Then select the value of x2 (possible numbers 0-9). For example: 17 is x1 = 1, x2 = 7; 107 is x1 = 10, x2 = 7. Invalid CC numbers will not be accepted).